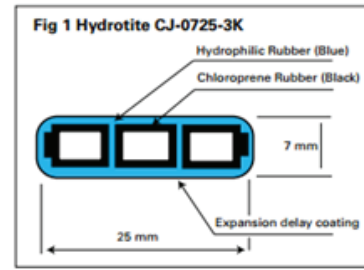




WATERSTOP

HYDROTITE – SWELL WATERSTOP

This premium grade, water swellable waterstop range is used as a waterproofing sealant in cast in-situ concrete. Its self-adhesive backing makes it easy to install and reduces construction time and costs. It expands as it absorbs water, conforming to gap variation, and creating an effective, waterproofing, compression seal in both vertical and horizontal construction joints. Its delay coating helps to prevent premature expansion.

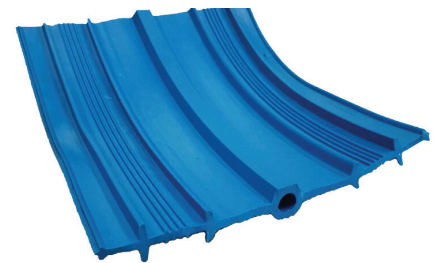


Dimensions: 25mm x 7mm, 10m per roll, 40m per carton

Description	Code Number
Hydrotite Swell Waterstop	WSHYD

FOSROC SUPERCASST PVC WATERSTOPS

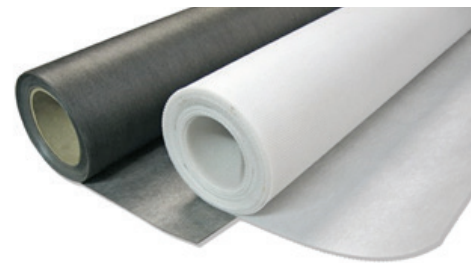
Centrally and externally placed PVC waterstop profiles for use in in-situ cast concrete. Water-retaining for use in swimming pools, reservoirs, dams, canals, water towers, sewage tanks, and bunded areas surrounding liquid retaining tanks. Water excluding for use in basements, underground carparks, tunnels, subways, abutments, retaining walls, roof decks and podium areas.



Description	Code Number
Sure-Stop PVC Waterstop	WSPVC

CPF LINER

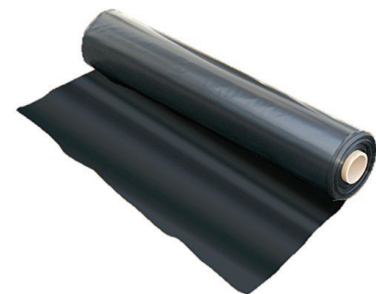
Controlled Permeability Formwork (CPF) liners significantly enhance the durability and finish of surface concrete during concrete pour. They are a cost-effective way of potentially doubling the life of concrete structures. The CPF liner is a thermally bonded polypropylene membrane that is placed to the internal face of formwork to provide a high quality and durable surface. It is designed to retain majority of cement and increases the potential service life of all concrete structures. It is generally used in civil, mining, and marine projects.



Description	Dimensions	Weight (kg)	Code Number
CPF Liner	35m x 2.5m x 2.2mm	59	CPFL

BUILDERS FILM PLASTIC SHEETING

Polythene Building Film, also known as Builder's Plastic, provides a moisture barrier in construction applications. Its 200UM medium impact membrane can be used as an underlay, under slab on ground construction. The plastic membrane is overlapped and sealed by taping the joints with duct tape. It can also be used as a plastic tarpaulin, protective floor cover, temporary weather protection and more.



Description	Code Number
Plastic Underlay Film 4x50m Med. Impact Black	PUF450MIB

Other grades and sizes are available upon request.

SKELETON CAULKING GUN

The Skeleton Caulking Gun is used with 300mL silicone and sealant tubes, such as the ROYALseal. Its comfortable pistol grip and steel rod quick-release system achieves a continuous, smooth and steady flow of silicone, to seal and fill joints and gaps in formwork.



Description	Code Number
230mm Caulking Gun	MED1400



ROYAL SEAL – PREMIUM FORMWORK SILICONE

Premium, neutral curing formwork silicone with flexible waterproof sealant for formply sheet edges/ joints, and to create watertightness on the formed face. It prevents concrete moisture loss and/ or cement grout leaking through the formply joints or edges. This prevents honeycombing, ragged edges and colour variation from hydration staining. ROYALseal is also ideal for sealing gaps within the formwork and/or when formwork butts up against other materials such as masonry or stone walls. Excellent adhesion to most common materials such as wood, brickwork, stone and metal.

Available in light grey (to blend with concrete finish) or clear.



Description	Code Number
ROYALseal Grey 300mL	SEALRGR300
ROYALseal Translucent 300mL	SEALRTR300

TAPES

FOAM SEALING TAPE

Low density, grey, polyurethane, open cell, single-sided adhesive foam tape, seals formply edges and joints from formwork. Its self-adhesive backing makes it easy to place onto edges of formply joints and butt joint adjoining formply sheet to seal off formply joints. Thicker foam tapes are also available to seal gaps under metal deck sheeting such as Bondek or Condeck on formwork deck to limit slurry loss.



Description	Code Number
Foam Sealing Tape	FST

DUCT TAPE

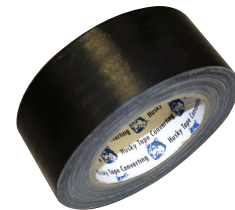
Used for joining and repairing polyethylene plastic sheeting in concrete and building construction, and as a strong, multi-purpose tape for bundling and strapping.



Description	Code Number
Duct Tape 48mm x 30m	DT

CLOTH TAPE

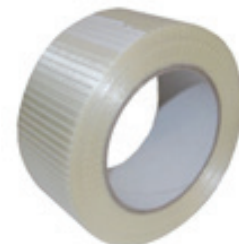
This premium grade, strong rayon cloth with waterproof polyethylene coating seals out moisture and has excellent adhesion to most surfaces.



Description	Code Number
Silver Cloth Tape 48mm x 25m	SCT4825

FILAMENT TAPE

Premium grade, cross direction, strong fibreglass reinforced filaments for extra strength is used for heavy duty palletising, strapping, bundling and reinforcing. Aggressive shear resistant adhesive



Description	Code Number
Filament Tape	FT